

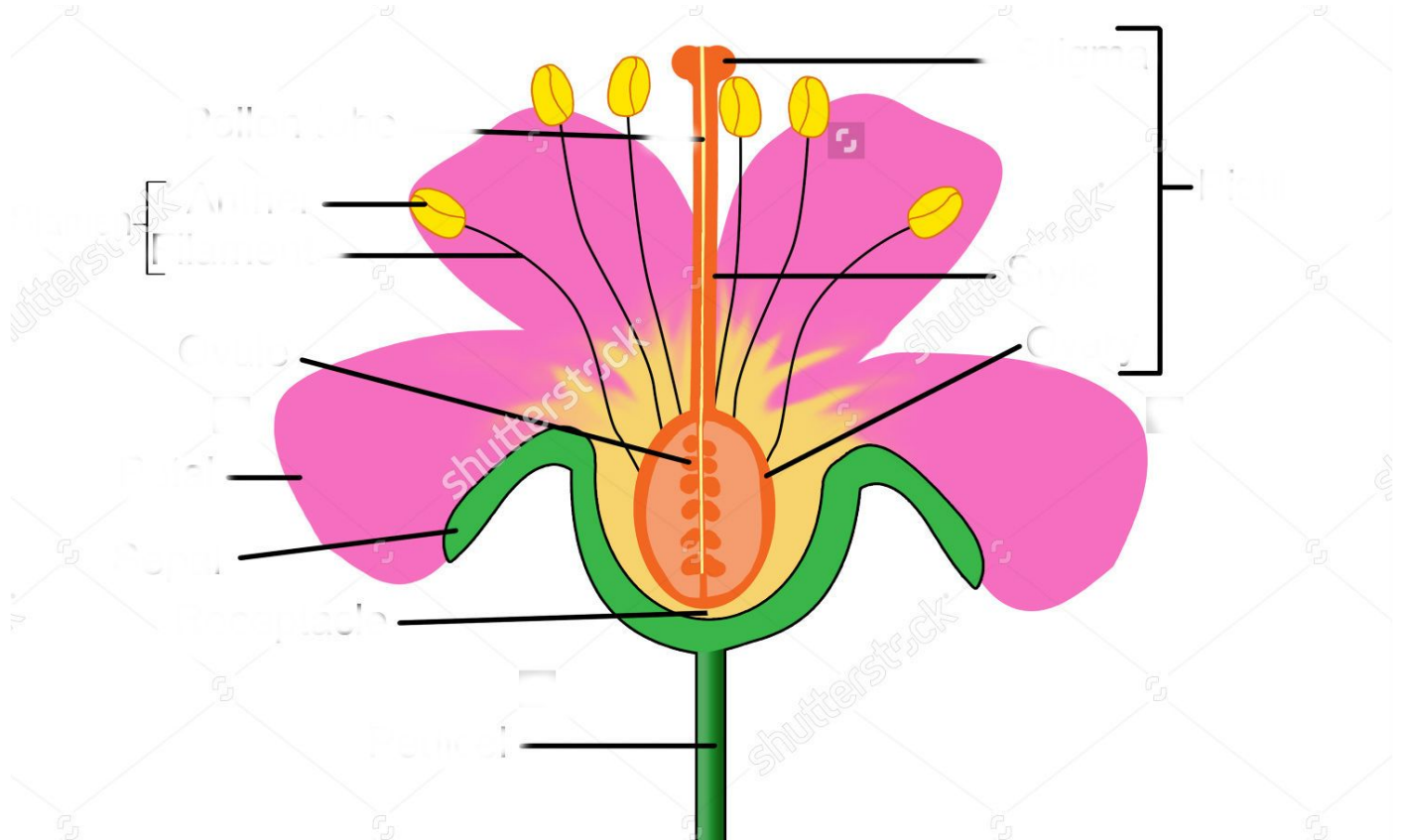
# PARTS OF A FLOWER

Name: \_\_\_\_\_

## Activity 1

A simple flower dissection

Figure 1



<https://image.shutterstock.com/z/stock-vector-parts-of-a-flower-vector-illustration-flower-diagram-useful-for-school-and-student-76743484.jpg>

Drawing of the flower given.

- Color of the flower is \_\_\_\_\_
- No. of petals- \_\_\_\_\_
- No. of stamens- \_\_\_\_\_
- No. of ovules- \_\_\_\_\_

Dissect the Hibiscus flower and label the following:

Sepals, Petals, Anther, Stamen, Filament, Stigma, Style, Ovary, & Pistil

Analysis:

1. Name the female parts of your flower.
2. Name the male parts of your flower.
3. In your flower, which was longer?
4. Was your flower a complete or an incomplete flower?
5. Was your flower releasing pollen? How could you tell?
6. Why would having a longer pistil or stamen be an advantage in pollination?
7. Are the flower petals symmetrical ?
8. Are the petals separate or are they formed into a tube?
9. Count the number of petals.

10. Look for sepals, count them and state their colour .
11. Find the stamens. Are they separate or attached to something else?
12. Are the filaments long or short?
13. How many ovaries can you see ?
14. Is the style long or short?
15. What shape is the stigma?

Conclusion: Write 2-3 sentences on what you learned.