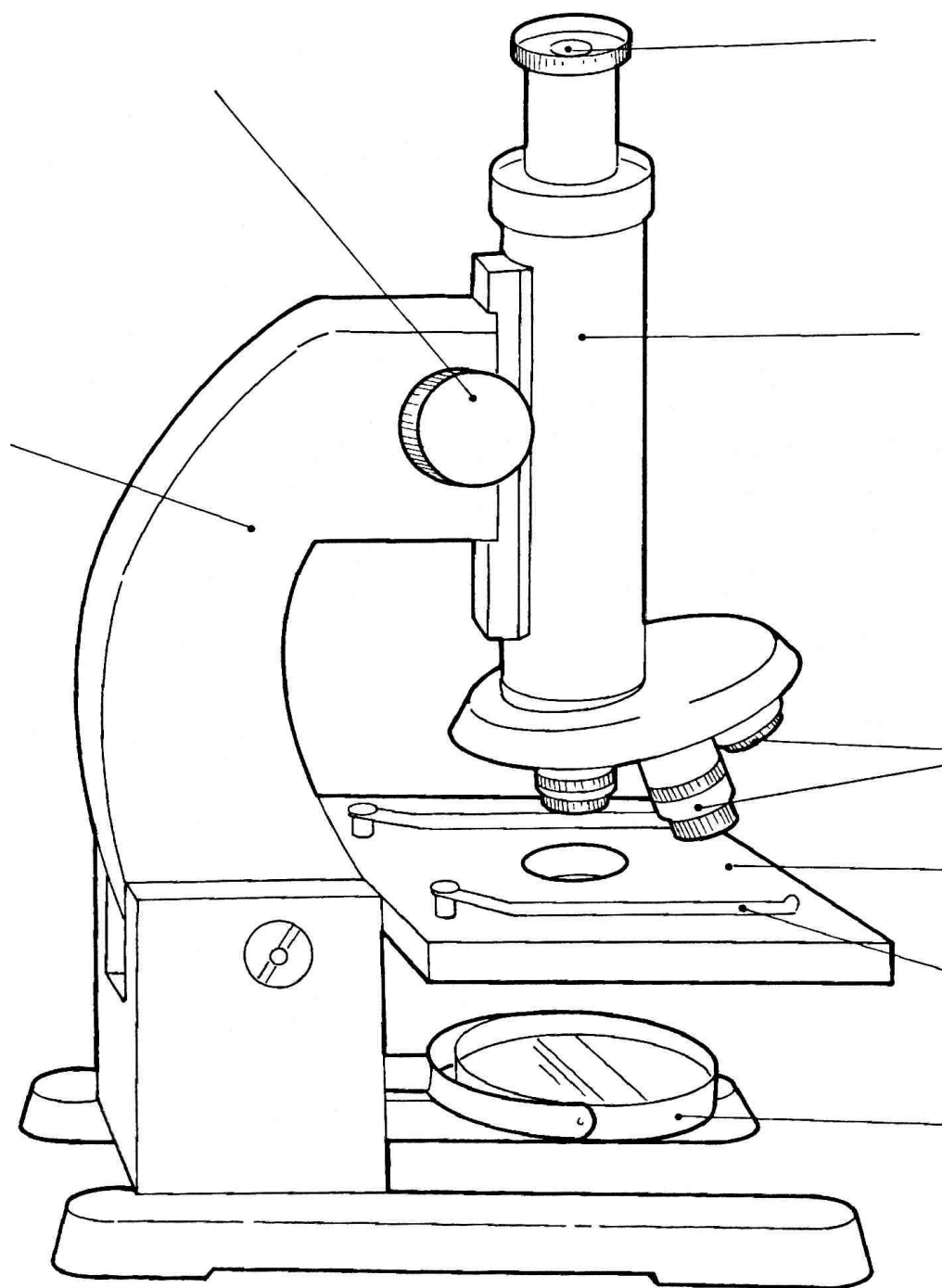


Name \_\_\_\_\_ Class \_\_\_\_\_

Label the microscope using these words:

*eyepiece lens**mirror**clip**objective lens**handle**focussing knob**tube**stage*

**7A1**

*Who invented the microscope?*

**HOMEWORK SHEET**  
**Library Research**

Go to the library and find out:

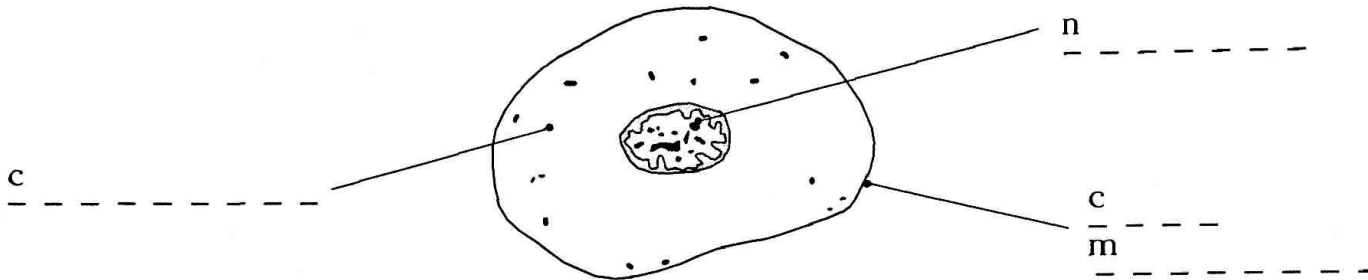
- 1** Who invented or discovered the first microscope?
- 2** What did the first microscope look like?
- 3** How much did the first microscope magnify?
- 4** Draw a picture of the first microscope.
- 5** Write down the list of information books, ROMs or internet sites you used for your research.

Name \_\_\_\_\_ Class \_\_\_\_\_

**Animal cells**

- Label the parts of this animal cell using the words in the box.

nucleus	cell membrane	cytoplasm
---------	---------------	-----------

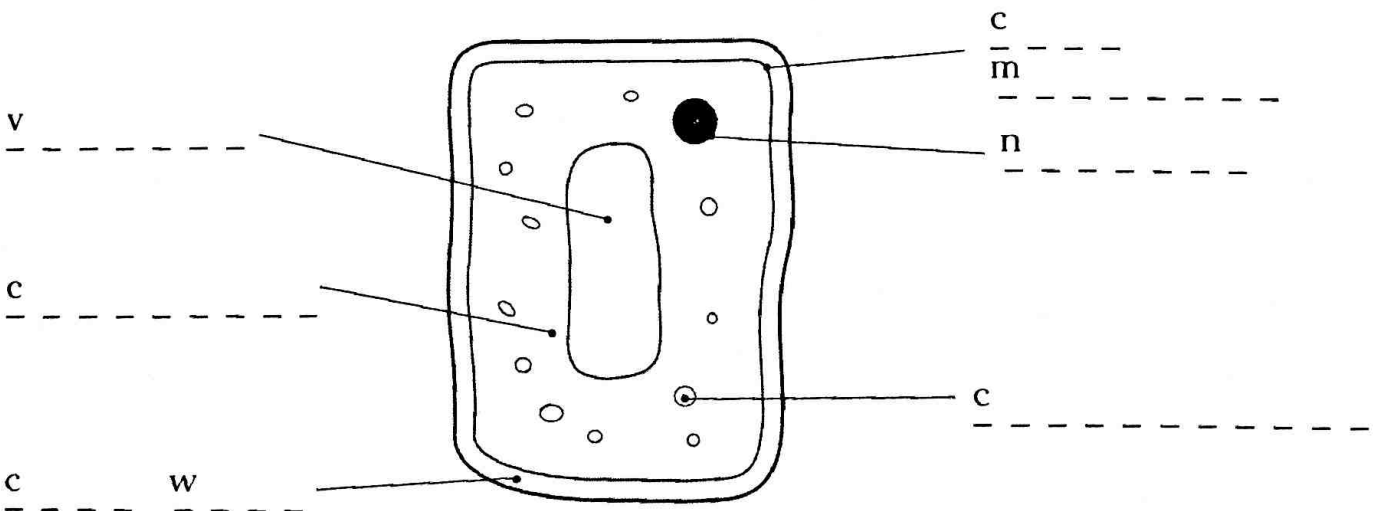


- Which part is like a thin skin around the cell? \_\_\_\_\_
- Which part controls the cell? \_\_\_\_\_

**Plant cells**

- Label the parts of this plant cell using the words in the box.

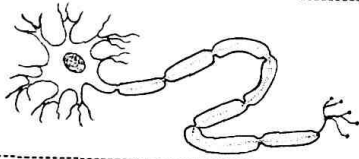



nucleus	cell wall	cytoplasm	cell sap
vacuole	cell membrane	chloroplast	



- Which three parts do plant cells and animal cells both have?   
 n \_\_\_\_\_   
 c                      m                      c
- Which parts of a plant cell trap light energy? c \_\_\_\_\_
- What is kept in the vacuole? c                      s \_\_\_\_\_

Name \_\_\_\_\_ Class \_\_\_\_\_

- Cut out the different pictures, shapes and jobs in this table.

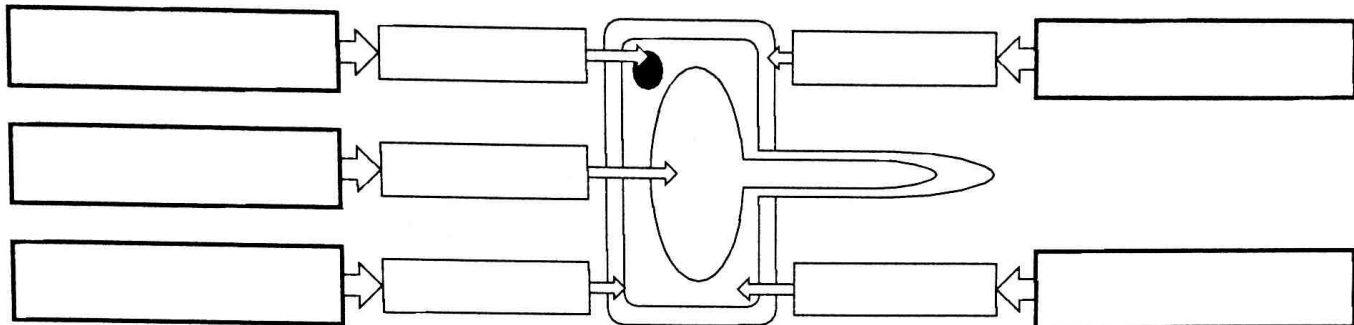
Picture	Shape	Job
	hollow tube	carries oxygen
	wire-like	swims to the egg
	has a tail	carries water
	flat disc	carries messages

- Try and match up the correct picture, shape and job with each type of cell in the table below. When you think they are all in the correct places, stick them on to the table. Stick the finished table in your book.

Type of cell	Picture of cell	Shape	Job
sperm cell			
xylem cell			
red blood cell			
nerve cell			

Name \_\_\_\_\_ Class \_\_\_\_\_

This is a diagram of a root hair cell. A root hair cell is found on the end of a plant's root. It is used to absorb water and minerals from the soil.



**Activity 1**

In a group of three cut out the labels below and match them to the diagram above

- |               |           |
|---------------|-----------|
| nucleus       | cell wall |
| cell membrane | vacuole   |
| cytoplasm     |           |

**Activity 2**

Now match these functions to the parts you have labelled

- |                                                |                          |                                         |
|------------------------------------------------|--------------------------|-----------------------------------------|
| Controls the cell                              | Keeps the cell sap in    | Allows chemical reactions to take place |
| Allows chemical to pass in and out of the cell | Gives the cell its shape |                                         |

**3 Describe the structure of a root hair cell.**

A root hair cell is

It also has

**4 Explain how this cell is different from a leaf cell.**

A root hair cell is different from a leaf cell because

Three reasons why this cell is different from a leaf is because

Also

Finally